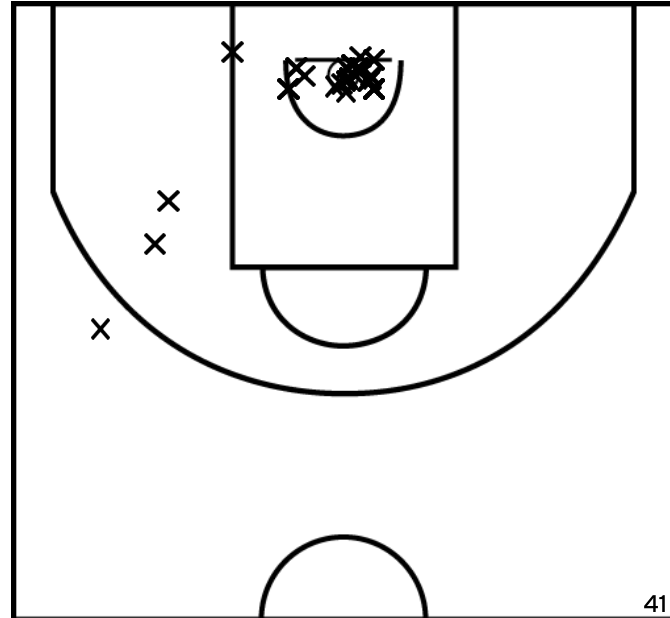


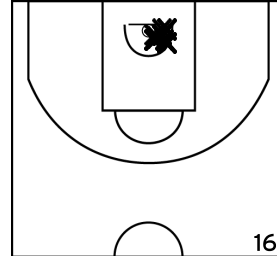
Rencontre: 1751 Date: 08/10/22 Heure: 18:00

Arbitre: GAINON M

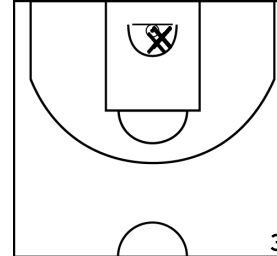
ÉQUIPE SABLE BASKET - 1 (A)



PÉRIODE 1



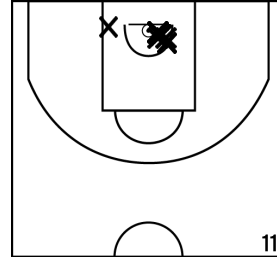
PÉRIODE 3



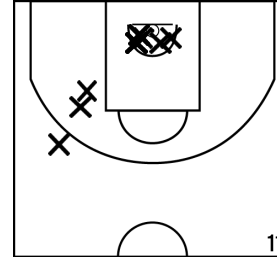
PROLONGATIONS



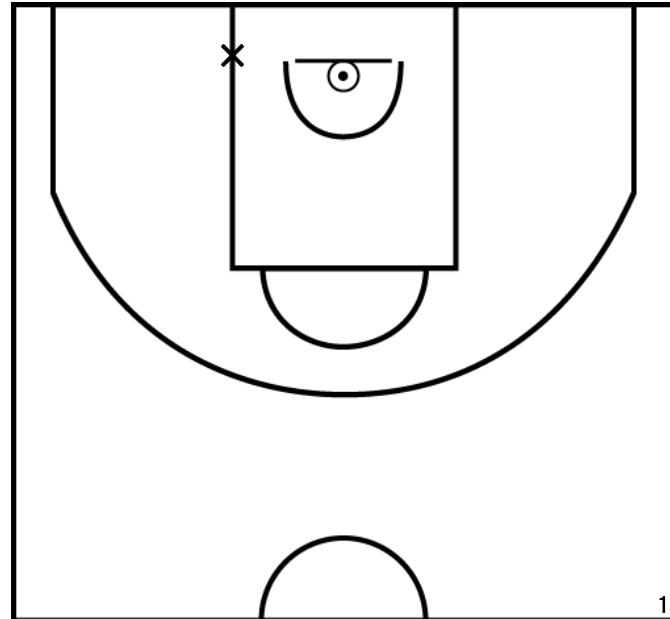
PÉRIODE 2



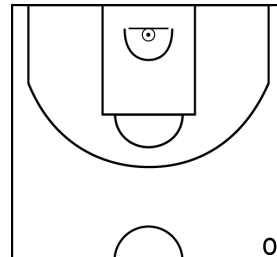
PÉRIODE 4



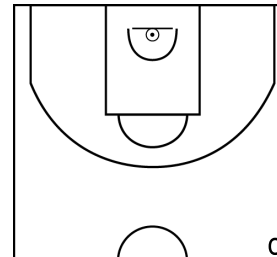
MOTTAIS D. - SABLE BASKET - 1 (A)



PÉRIODE 1



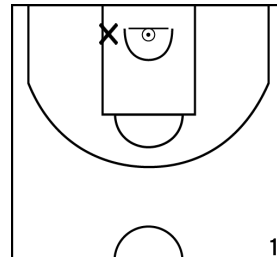
PÉRIODE 3



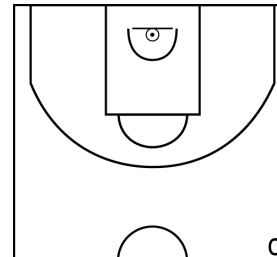
PROLONGATIONS



PÉRIODE 2



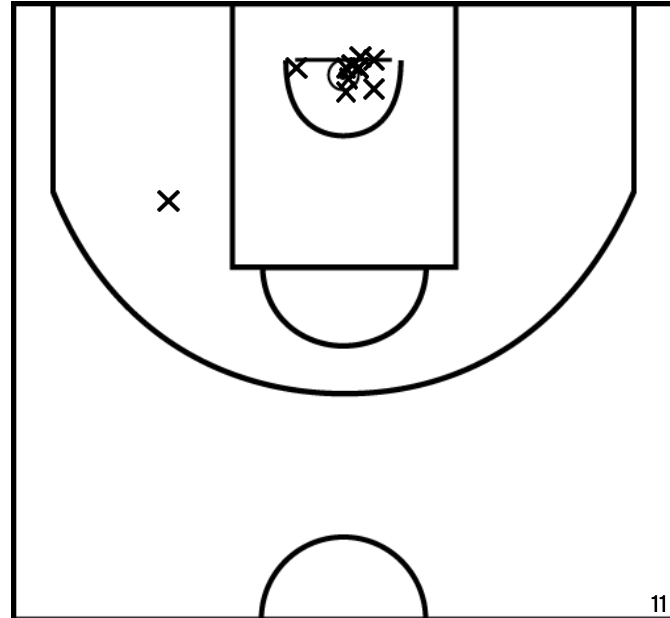
PÉRIODE 4



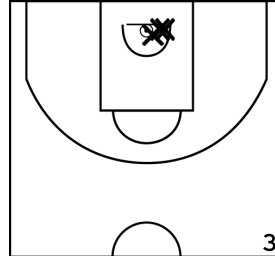
Rencontre: 1751 Date: 08/10/22 Heure: 18:00

Arbitre: GIGNON M

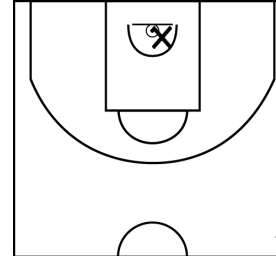
GRUDE T. - SABLE BASKET - 1 (A)



PÉRIODE 1



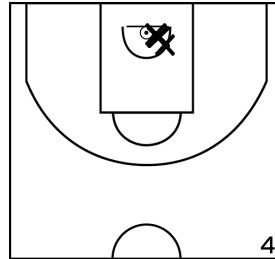
PÉRIODE 3



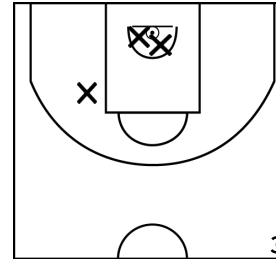
PROLONGATIONS



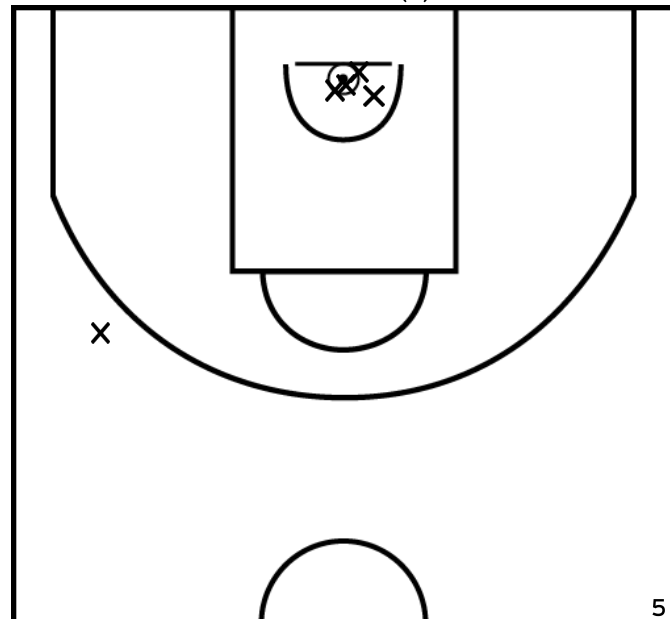
PÉRIODE 2



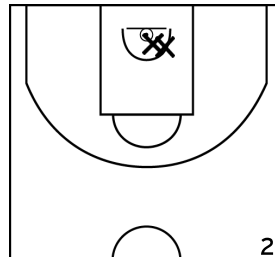
PÉRIODE 4



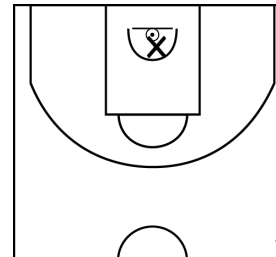
LEMETAYER S. - SABLE BASKET - 1 (A)



PÉRIODE 1



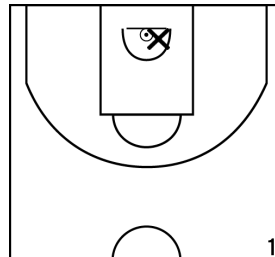
PÉRIODE 3



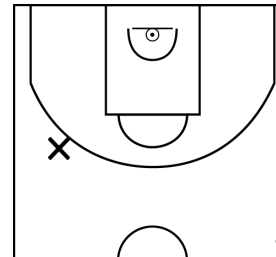
PROLONGATIONS



PÉRIODE 2



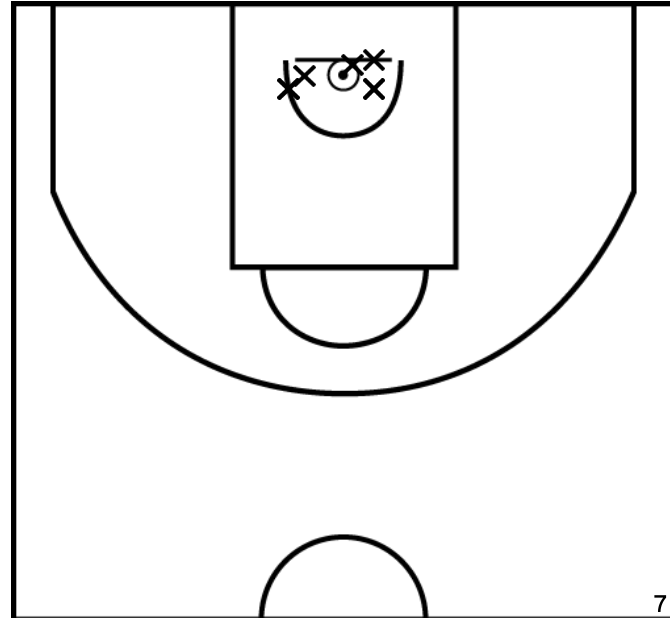
PÉRIODE 4



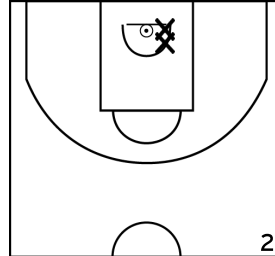
Rencontre: 1751 Date: 08/10/22 Heure: 18:00

Arbitre: GIGNON M

DECORSE L. - SABLE BASKET - 1 (A)



PÉRIODE 1



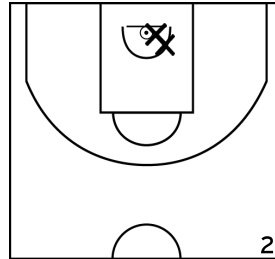
PÉRIODE 3



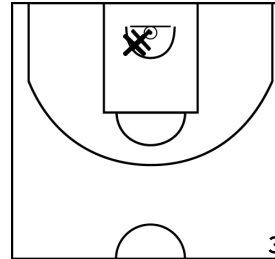
PROLONGATIONS



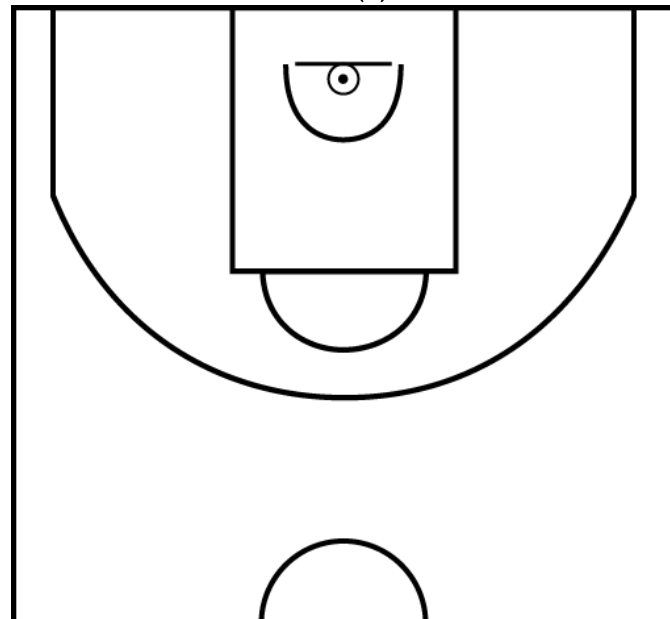
PÉRIODE 2



PÉRIODE 4



CHAPON L. - SABLE BASKET - 1 (A)



PÉRIODE 1



PÉRIODE 3



PROLONGATIONS



PÉRIODE 2



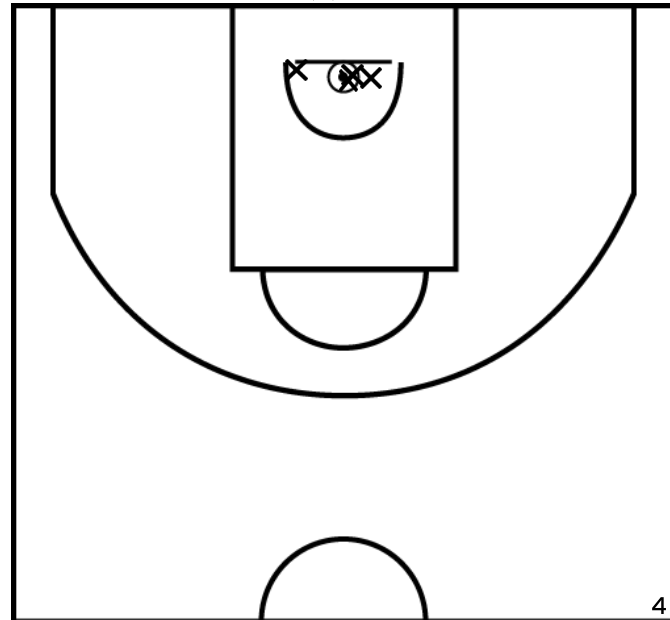
PÉRIODE 4



Rencontre: 1751 Date: 08/10/22 Heure: 18:00

Arbitre: GIGNON M

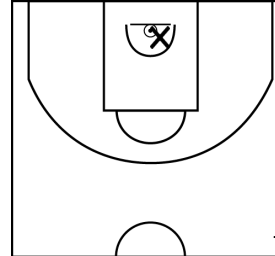
BLU N. - SABLE BASKET - 1(A)



PÉRIODE 1



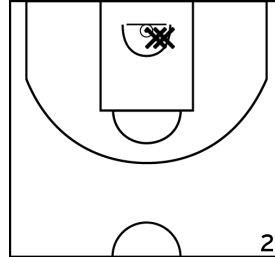
PÉRIODE 3



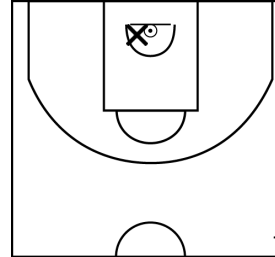
PROLONGATIONS



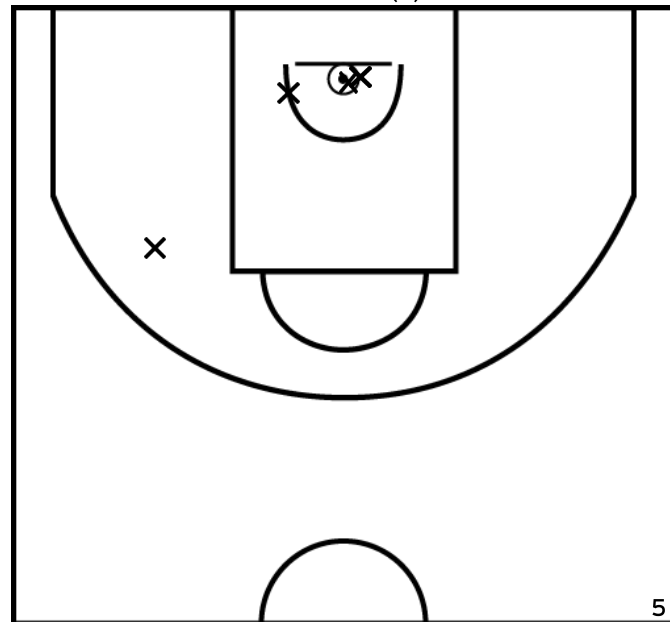
PÉRIODE 2



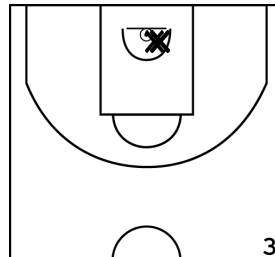
PÉRIODE 4



CHESNEAU B. - SABLE BASKET - 1(A)



PÉRIODE 1



PÉRIODE 3



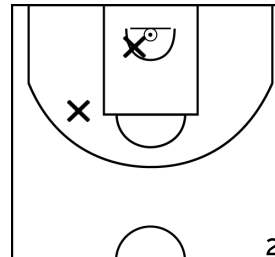
PROLONGATIONS



PÉRIODE 2



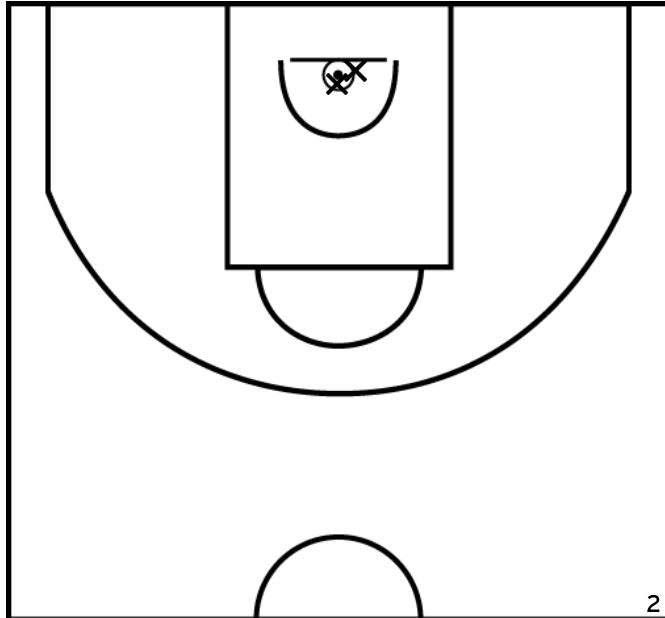
PÉRIODE 4



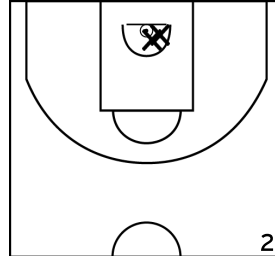
Rencontre: 1751 Date: 08/10/22 Heure: 18:00

Arbitre: GIGNON M

ZENGIN E. - SABLE BASKET - 1 (A)



PÉRIODE 1



PÉRIODE 3



PROLONGATIONS



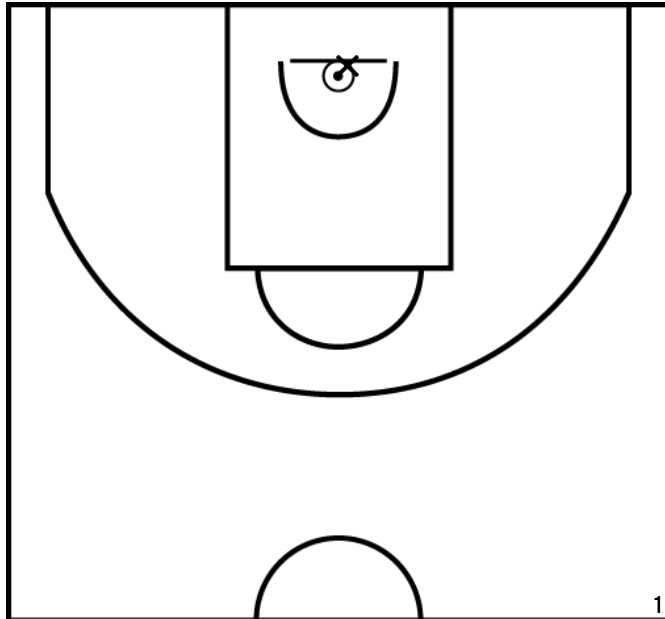
PÉRIODE 2



PÉRIODE 4



OGER S. - SABLE BASKET - 1 (A)



PÉRIODE 1



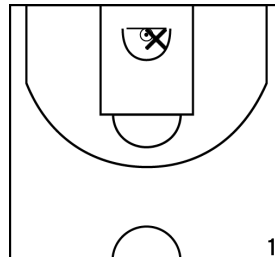
PÉRIODE 3



PROLONGATIONS



PÉRIODE 2



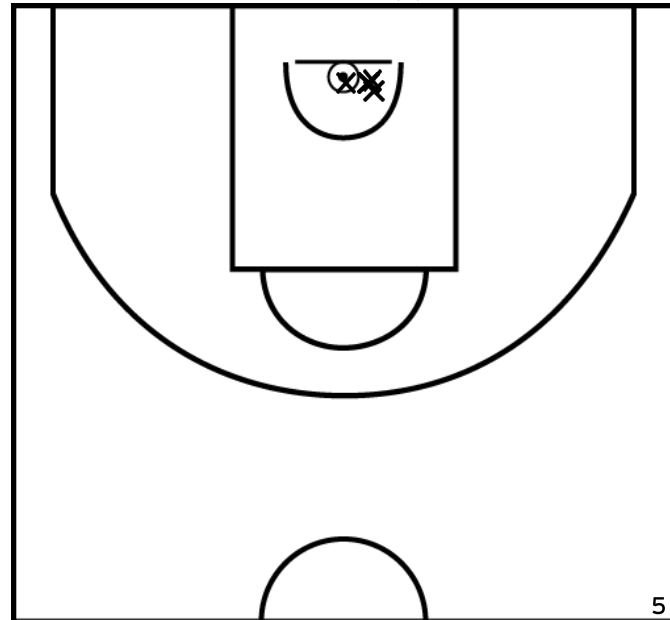
PÉRIODE 4



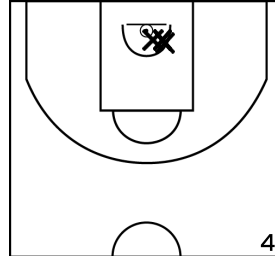
Rencontre: 1751 Date: 08/10/22 Heure: 18:00

Arbitre: GIGNON M

BARBAZAN M. - SABLE BASKET - 1 (A)



PÉRIODE 1



PÉRIODE 3



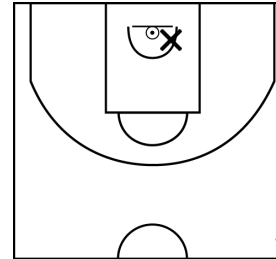
PROLONGATIONS



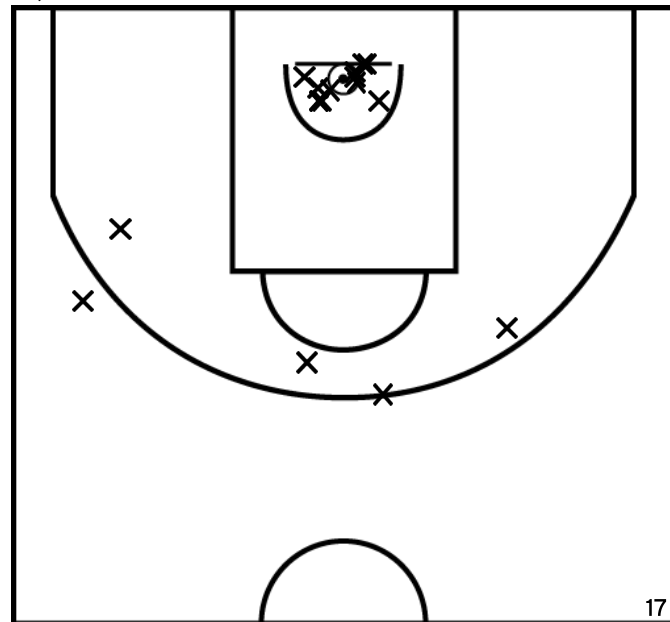
PÉRIODE 2



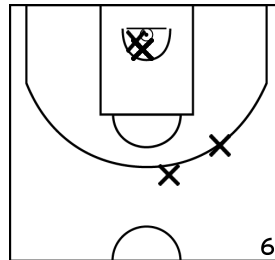
PÉRIODE 4



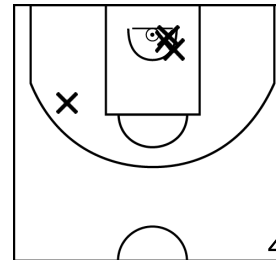
ÉQUIPE EN - CTC VAL DE SARTHE BASKET - CERANS YVRE BASKET - 1 (B)



PÉRIODE 1



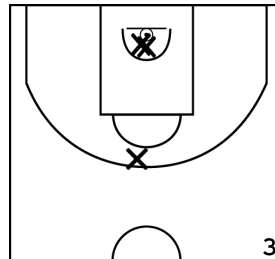
PÉRIODE 3



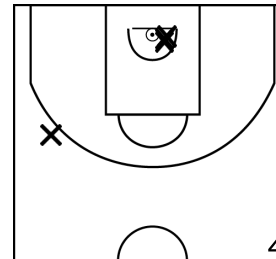
PROLONGATIONS



PÉRIODE 2



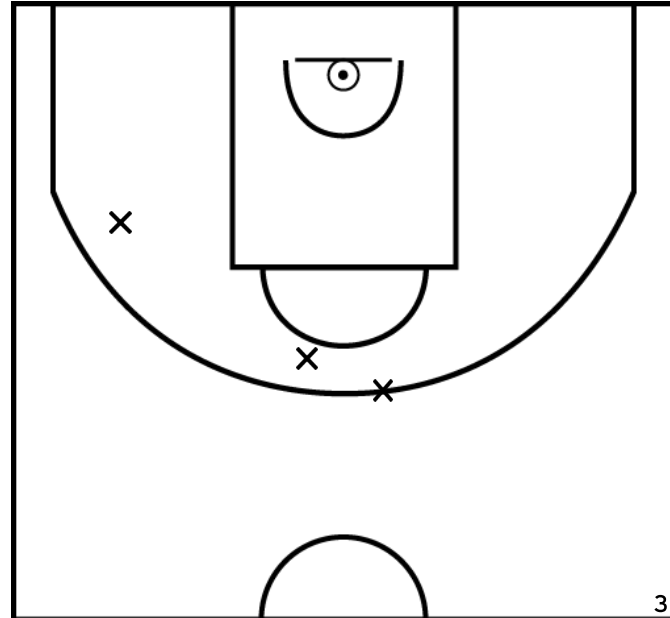
PÉRIODE 4



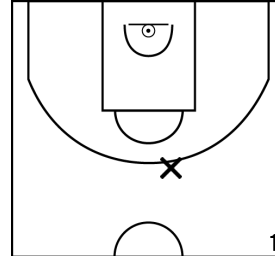
Rencontre: 1751 Date: 08/10/22 Heure: 18:00

Arbitre: GAINON M

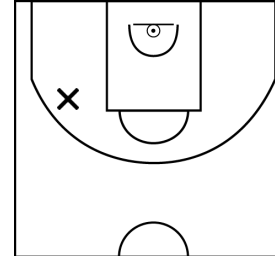
RONDEAU C. - EN - CTC VAL DE SARTHE BASKET - CERANS YVRE BASKET - 1 (B)



PÉRIODE 1



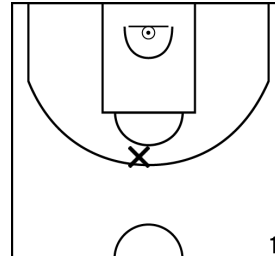
PÉRIODE 3



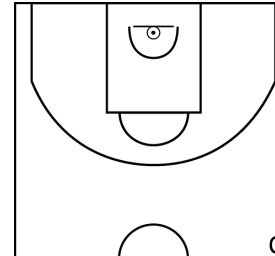
PROLONGATIONS



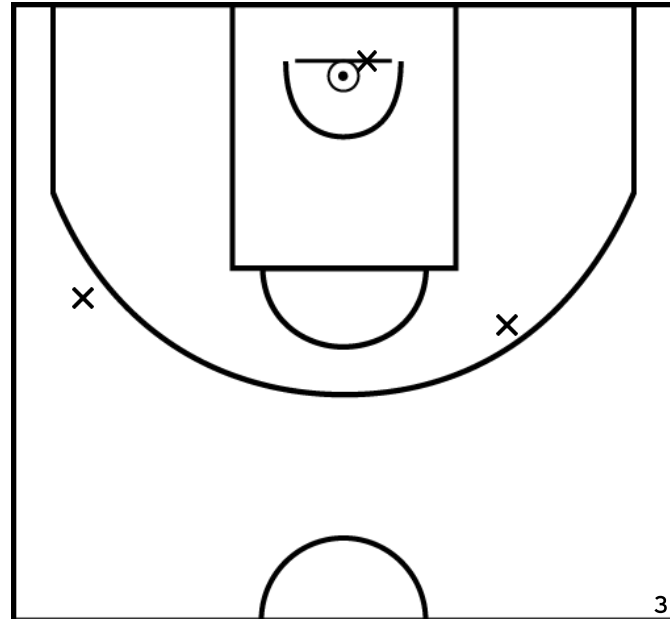
PÉRIODE 2



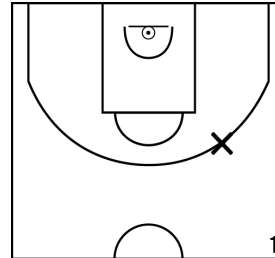
PÉRIODE 4



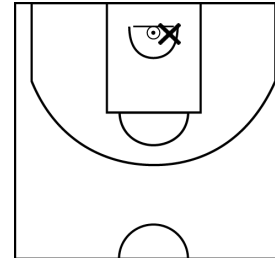
ROBOAM J. - EN - CTC VAL DE SARTHE BASKET - CERANS YVRE BASKET - 1 (B)



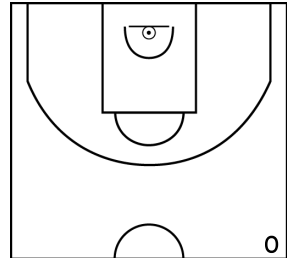
PÉRIODE 1



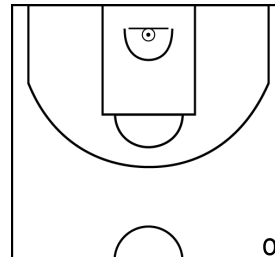
PÉRIODE 3



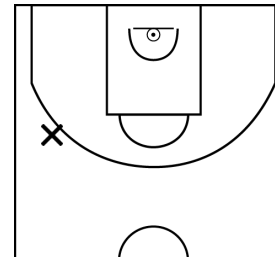
PROLONGATIONS



PÉRIODE 2



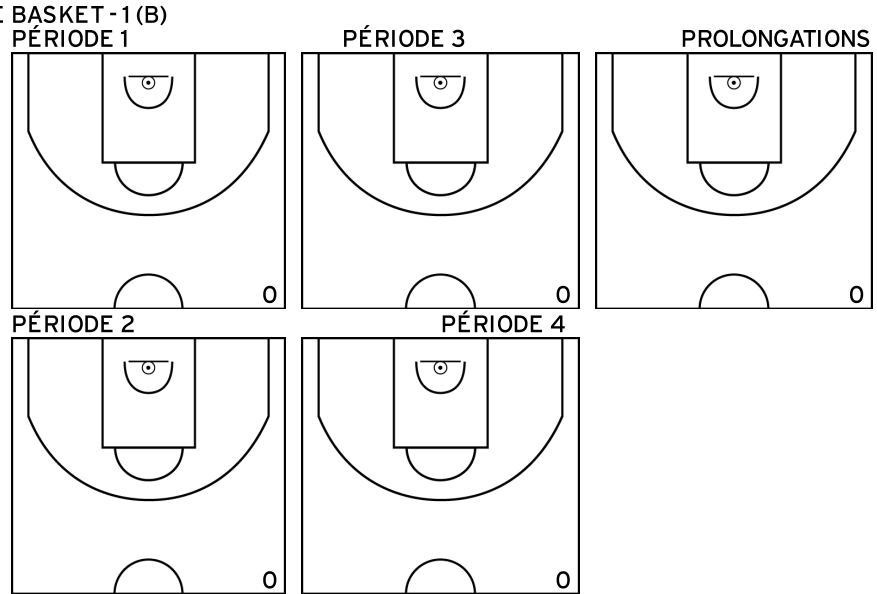
PÉRIODE 4



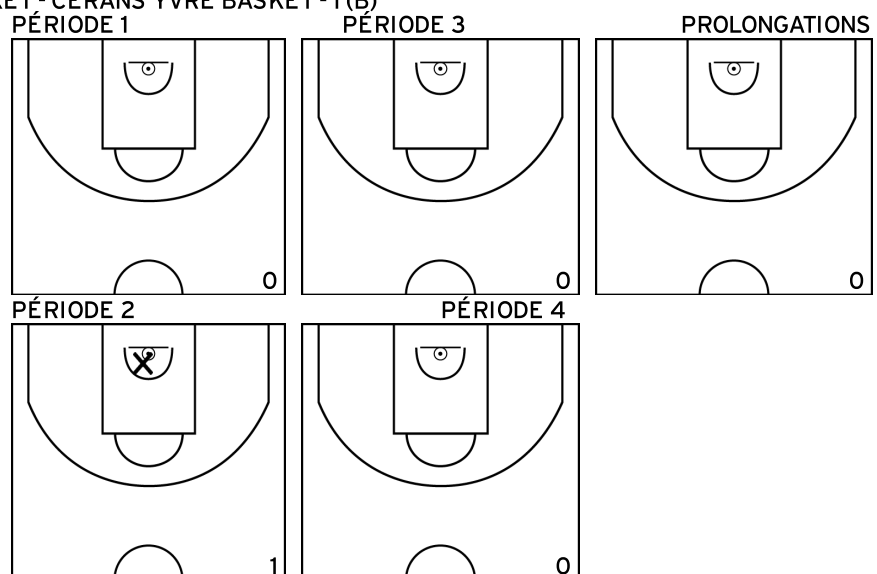
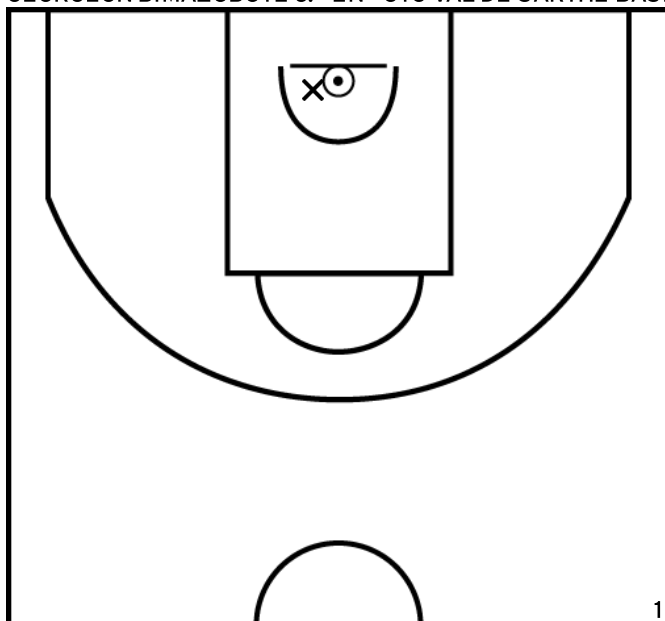
Rencontre: 1751 Date: 08/10/22 Heure: 18:00

Arbitre: GIGNON M

COTET J. - EN - CTC VAL DE SARTHE BASKET - CERANS YVRE BASKET - 1 (B)



GEORGEON BIMAZUBUTE J. - EN - CTC VAL DE SARTHE BASKET - CERANS YVRE BASKET - 1 (B)

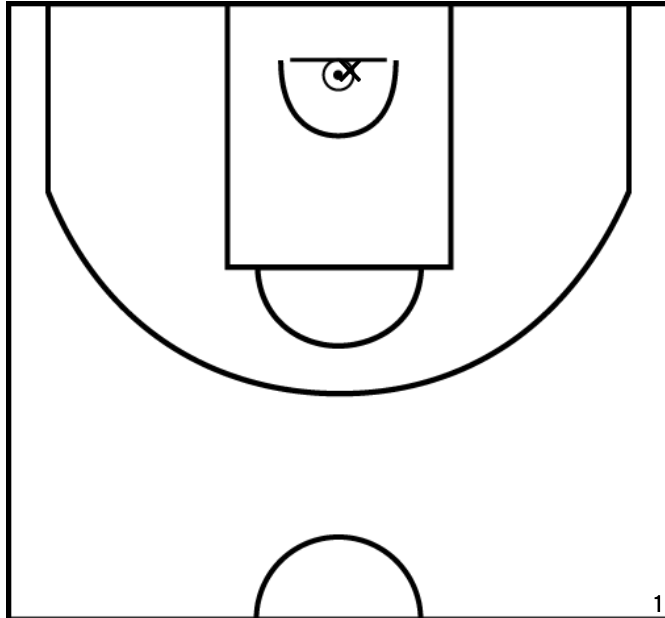




Rencontre: 1751 Date: 08/10/22 Heure: 18:00

Arbitre: GIGNON M

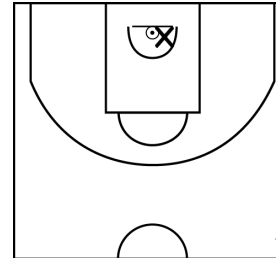
DIETLIN P. - EN - CTC VAL DE SARTHE BASKET - CERANS YVRE BASKET - 1(B)



PÉRIODE 1



PÉRIODE 3



PROLONGATIONS



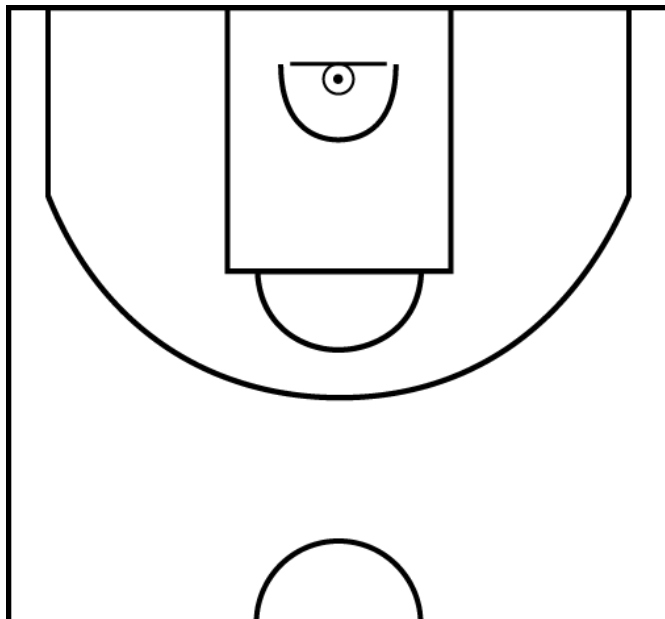
PÉRIODE 2



PÉRIODE 4



LOUVEAU S. - EN - CTC VAL DE SARTHE BASKET - CERANS YVRE BASKET - 1(B)



PÉRIODE 1



PÉRIODE 3



PROLONGATIONS



PÉRIODE 2



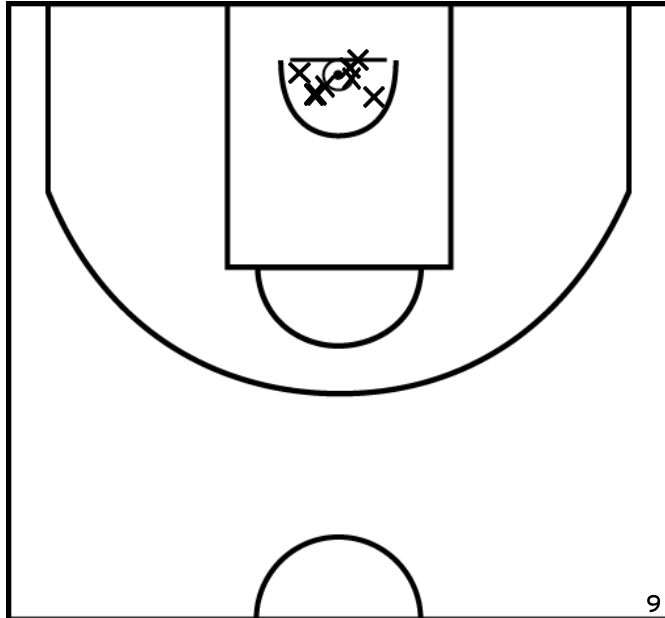
PÉRIODE 4



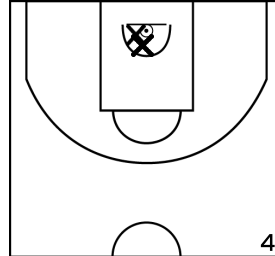
Rencontre: 1751 Date: 08/10/22 Heure: 18:00

Arbitre: GAINON M

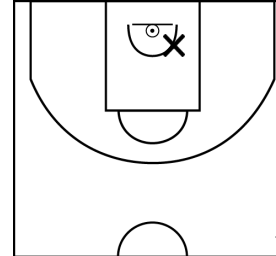
GUY A. - EN - CTC VAL DE SARTHE BASKET - CERANS YVRE BASKET - 1 (B)



PÉRIODE 1



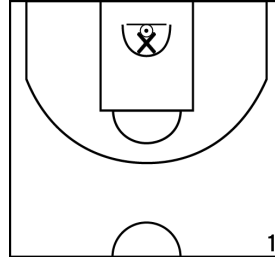
PÉRIODE 3



PROLONGATIONS



PÉRIODE 2



PÉRIODE 4

